

# Obstetrics & Gynecology NEWSLETTER

## SCIENCE FEATURES:

### **Dr. Pradeep Chaluvally-Raghavan Recognized with Endowed Chair for Advancements in Cancer Research**

Pradeep Chaluvally-Raghavan, PhD has been named the inaugural holder of the Linda G. and Herbert J. Buchsbaum, MD, Chair in Gynecologic Oncology for his significant contributions to advancing cancer research. This endowed chair, a joint position in the MCW Cancer Center and Department of Obstetrics and Gynecology, will enable Dr. Chaluvally-Raghavan to accelerate his research and further our understanding of cancer.

### **Study Co-Authored by Anna Palatnik, MD, shows treating preexisting high blood pressure in pregnancy improves maternal and fetal outcomes**

MCW participated in a NIH funded multisite study Chronic Hypertension and Pregnancy trial (CHAP) with Dr. Palatnik being the MCW site PI. The study found that in pregnant women with mild chronic hypertension, a strategy of targeting a blood pressure of less than 140/90 mm Hg was associated with better pregnancy outcomes. The findings of this study were published in the New England Journal of Medicine with Dr. Palatnik as a co-author.

## **GRANT HIGHLIGHT**

Drs. Menon, Cruz, Kaljo, and Kruper are Co-Investigators in a grant they were awarded from the Wisconsin Doula of Color Collective entitled "Advancing Equity in Maternal and Child Health". It supports the development of a community doula program called Wisconsin Doula of Color Collective and eventual partnership with Froedtert Obstetric patients to help improve birth outcomes.

## NEW GRANTS:

- **Anna Palatnik, MD:** *National Institute of Child Health & Human Development (NIH)* — 1R01HD108194 — Gestational Diabetes and Pharmacotherapy (GAP)
- **Sunila Pradeep, PhD:** *Department of Defense (DoD)* — W81XWH2210138—Translational Adaptations in Macrophage for Ovarian Cancer Progression
- **Janet Rader, MD:** *National Institutes of Health/ National Cancer Institute (NIH/NCI)* - 1R01CA262198 — R- Enlisting HPV Integration Events to Illuminate Drivers and Target Treatment in Invasive Cervical Cancer
- **Sunila Pradeep, MD:** *F&MCW Cancer Center*—Harnessing PD-L1 Expression in Ovarian Cancer ACS-Supplement
- **Seema Menon, MD, Meredith Cruz, MD, Kristina Kaljo, PhD and Abbey Kruper, PsyD:** *State of WI—Wisconsin Doula of Color Collective*—Advancing Equity in Maternal and Child Health
- **Kate Dielentheis, MD:** *Department of Health Services*—Assoc. of Professors of Gynecology and Obstetrics—Hands-On and Simulation-Based Abortion Education for Legally Precarious Environments

NEW CLINICAL TRIALS:**CLINICAL TRIAL HIGHLIGHT:****Gestational Diabetes and Pharmacotherapy (GAP) - A Randomized Controlled Trial Investigating Timing of Pharmacotherapy Initiation for Patients with Gestational Diabetes—****PI: Anna Palatnik, MD**

The goal of this study is to compare two different thresholds for initiation of medical treatment for GDM. Pregnant women diagnosed with GDM will be randomized to either start pharmacotherapy when they have reached at least 20% or at least 40% of capillary blood glucose (CBG) values above the target goal. The investigators hypothesize that a lower threshold of 20% elevated CBG levels, compared to 40%, will lead to lower rates of obstetric and medical complications.

- **PI: Anna Palatnik, MD—Continuous Positive Airway Pressure (CPAP) for Sleep Apnea in Pregnancy (SLEEP):** A Randomized Trial of Continuous Positive Airway Pressure (CPAP) for Sleep Apnea in Pregnancy (SLEEP). It is a randomized controlled trial of 1,500 women to assess whether treatment of sleep disordered breathing with continuous positive airway pressure (CPAP) in pregnancy reduces the rate of hypertensive disorders of pregnancy
- **PI: Anna Palatnik, MD—Prematurity Risk Assessment Combined with Clinical Interventions for Improving Neonatal Outcomes (PRIME):** A randomized PTB prevention strategy (PTB Prevention arm) or to standard of care management (Control arm). Subjects randomized to the preterm birth prevention strategy will receive either routine standard of care pregnancy management or a multimodal intervention protocol reserved for higher risk pregnancies based on the results of a commercially-available laboratory developed test, PreTRM® (Sera Prognostics, Inc). The intervention protocol utilizes well-established high-risk pregnancy interventions to improve maternal and neonatal health outcomes.
- **PI: William Bradley, MD—NRG-GY022:** Assessment of Carboplatin Clearance Predictors: A PK Study on NCI-Sponsored Clinical Trials or Standard of Care Treatments Using Carboplatin.
- **PI: William Bradley, MD—NRG-GY023:** A Randomized Phase II Trial of Triplet Therapy (A PD-L1 Inhibitor Durvalumab (MEDI4736) in Combination with Olaparib and Cediranib) Compared to Olaparib and Cediranib or Durvalumab (MEDI4736) and Cediranib or Standard of Care Chemotherapy in Women with Platinum-Resistant Recurrent Epithelial Ovarian Cancer, Primary Peritoneal or Fallopian Cancer Who Have Received Prior Bevacizumab
- **PI: Denise Uyar, MD—STRO-002-GM2:** A Study of STRO-002, an Anti-Folate Receptor Alpha Antibody Drug Conjugate, in Combination With Bevacizumab in Epithelial Ovarian Cancer
- **PI: Libby Hopp, MD—GOG-3059:** A Phase 3, Randomized, Double-Blind, Adaptive, Placebo/Paclitaxel-Controlled Study of AVB-S6-500 in Combination with Paclitaxel in Patients with Platinum-Resistant Recurrent Ovarian Cancer
- **PI: William Bradley, MD—NRG-CC008:** A Study to Compare Two Surgical Procedures (bilateral salpingectomy and bilateral salpingo-oophorectomy) in Women With BRCA1 Mutations to Assess Reduced Risk of Ovarian Cancer

## WELCOME:



**Jacqueline Peebles, MD** —Associate Professor in General Obstetrics and Gynecology, joining us from University of Wisconsin-Madison.



**Akinyemi Ojesina, MD, PhD** —Assistant Professor in Obstetrics and Gynecology, joining us from University of Alabama



**Bailey Morrow, PA-C** —Certified Physician Assistant in General Obstetrics and Gynecology, joining us from Froedtert West Bend Hospital



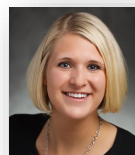
**Carol Eling, NP** —Nurse Practitioner in Reproductive Endocrinology & Infertility



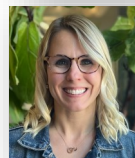
**Alina Tvina, MD** —Fellow in Maternal-Fetal Medicine, joining us from our Residency Program.



**Susan Duyar, MD** —Fellow in Gynecologic Oncology, joining us from Northwestern University



**Chelsea Bodoh** —  
Financial Analysis  
Manager



**Kristin Rose** —  
Administrative Coordinator  
and assistant to GynOnc  
division and Dr. Rader



**Subarna Paul, MBBS,  
MSc, CCRC** —  
Clinical Research Manager



**Mariana Karasti, MPH**—  
Research Coordinator



**Nicole Sequeira, MBBS**  
— Research Coordinator

## Secondary Faculty:



**Stephanie Olivier-Van  
Stichelen, PhD**—Assistant  
Professor in Biochemistry;  
Secondary Faculty in Obstetrics  
& Gynecology



## CLINICAL UPDATES:

**Fibroid Clinic**—We are excited to be partnering with MCW's new Physician Assistant Program. Jessica Grusnick PA-C, Assistant Professor, has been hired as the Associate Program Director of the program and will also be assisting Dr. Benjamin Beran with management of patients with complex fibroids and endometriosis. Jessica has 10 years of outpatient OB-GYN experience, as well as chronic pain management experience with Internal Medicine. The addition to our team will greatly enhance our capacity to care for these patients. ....



**REI Clinic**— We have purchased a device, ZyMot, which is a microfluidic sperm filtration device for use with in vitro fertilization (IVF) and intrauterine insemination (IUI) to select the healthiest sperm with lowest DNA fragmentation.

We now have 2 embryoscopes, which monitor embryo development in real-time and allows for 'time lapse imaging' which allows our embryologists the ability to analyze and select the highest quality embryos.

## FROM THE CHAIR:

On November 16, the Department of OBGYN had its first retreat after 2 years of virtual meetings and education conferences. We shared academic accomplishments and provided innovative suggestions on medical student and residency education and rotations. I provided an outline of upcoming state and national funding for maternal health. I also highlighted and provided personal context to three significant 50-year anniversary events designed to bestow rights to women: the Roe v. Wade Supreme Court decision, the Equal Rights Amendment, and the Title IX amendment of the Higher Education Act.

The ultimate success of Title IX is thought to be due to its simple statement, “No person in the United States shall, on the basis of sex, be excluded from participation in, be denied the benefits of, or be subjected to discrimination under any education program or activity receiving federal financial assistance.” Title IX has done a nice job in youth sports and advanced education for girls but does not completely close the equity gap especially in a country that has become so diverse. To achieve equality, the work must continue, and I am sure you will all be part of these solutions.

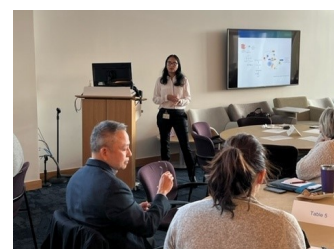
During the session on *Leading through Change* by Rachelle Hoehnen and Nate Filzen in the Office of Faculty Affairs I began thinking not only of individual empathy but emotionally intelligent teams. These are teams which are self-aware, teams where people know each other's strengths and weaknesses and provide a sense of belonging and psychological safety, teams that name issues that are surfacing and deal with them and are candid with each other and trust each other. Our department embodies many of these features and I thank you for being part of our team.

Thank you to Drs. Kate Schoyer, Kate Dielentheis, Garrett Fitzgerald, Kim Gecsi, Anna Palatnik, and Emily Davidson for their strong work on program development. Thank you to Kristin Rose for coordinating and being sure we had a place to meet and something to eat and a special thanks to Jonathan Davidson for wowing us with magic card tricks during lunch.

The in-room presence strengthened our work relationships and personal well-being. I hope you enjoy the photos from our day together!

Janet S. Rader, MD

Jack A. and Elaine D. Klieger Professor and Chair



“The departmental retreat focused on faculty coming together for the first time after the COVID pandemic. We celebrated the accomplishments of many faculty and had several of them present their progress. We also focused on anticipated major changes to the residency and M3 clerkship and had a workshop entitled ‘Leading through Change’ led by the Office of Faculty Affairs.”

- Kate Schoyer, MD



**✓ MARK YOUR CALENDARS:**

We are so excited to bring our Endowed Lectures back IN PERSON this year! See details below.

**April 12, 2023: Eleanor Delfs, MD**  
**Lectureship for Pioneers**

Idahlynn Karre, PhD—CEO, Council for Healthcare Leadership from Denver, CO  
*Building and Sustaining Strong Interpersonal Relationships to create a Prism of Success*

**May 10, 2023: E. James Aiman, MD**  
**Endowed Lectureship**

Serena Chan, MD—Assistant Professor from University of Pittsburgh  
*Topic: Adolescent Gynecology*

**June 23, 2023: Resident and Fellow Graduation**

**June 28, 2023: Resident and Fellow**  
**Research & Alumni Day**

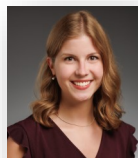


To support our department in research or education, visit our website at  
<https://obgyn.mcw.edu/about/donate/>  
 or call (414) 955-4711 to donate.

**SPARCC UPDATE:** From 2019-2022, we have had 53 Scholars participate from 23 states. To date, 17% of alumni are in medical school, 13% working in medicine/health professions, 13% in graduate school, and 8% in NIH Postbaccalaureate Fellowships. We are currently in recruitment season and excited to select our 5th cohort of students in early Spring of 2023!

**DEPARTMENT NEWS**

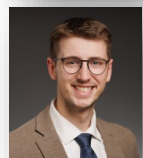
- **Emily Davidson, MD** — worked with MCW student, Vienne Sietz, for this year's Medical Student Summer Research Program (MSSRP) and was awarded one of the nine winning posters.
- **Jennifer McIntosh, MD, Kathy King, MD, and Allison Linton, MD**, were featured on MCW Department of Medicine's Word on Medicine series discussing the history and future of abortion care and Women's Reproductive Health.
- **Garrett Fitzgerald, MD, Jennifer McIntosh, MD, Ryan Spellecy, PhD, and Sarah Mess, CNM**, were featured on MCW Department of Medicine's Word on Medicine series discussing Research During Pregnancy and Breastfeeding.
- **Marissa Iden, PhD**, a research scientist in Dr. Janet Rader's lab, publishes blog post in Nature Portfolio Cancer Community on a pipeline for using HPV integration events to identify and prioritize novel cervical cancer target genes.
- **Dr. Raj Narayan** named Associate Dean for Student Affairs in the School of Medicine at MCW.
- **Stephanie Olivier-Van Stichelen, PhD**, secondary OBGYN faculty, has been awarded the 2022 Sally Bentley Early-Stage (ESI) Award to fund her research investigating mechanisms that contribute to gestational diabetes mellitus (GDM).

**CLASS OF 2026 RESIDENT INTERNS:**

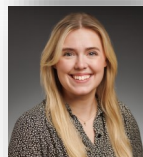
**Maria Brix, MD—**  
Medical College of Wisconsin



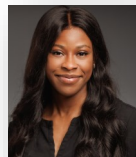
**Samantha Conner, MD—**  
University of Colorado



**Mitch Depke, MD—**  
University of Wisconsin



**Alyssa Hernandez, MD—**  
Des Moines University



**Ihuoma Igbokwe, MD—**  
Southern Illinois University



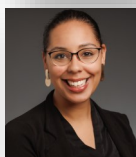
**Sydney Joyner, MD—**  
University of Illinois



**Maggie Nixon, MD—**  
Chicago Medical School



**Micaela Stevenson, MD—**  
University of Michigan



**Sarah Wesley, MD—**  
Morehouse School of Medicine

**RESIDENT NEWS:**

- **Katherine Pellino, MD ('23), Blake Neuburg, MD ('24), and Garrett Fitzgerald, MD** joined WI's Department of Health Services (DHS) Maternal Mortality Review Impact team for 2022-2023. It is designed to take recommendations from the maternal mortality review team and advocate for these recommendations on implementation.

**ALUMNI NEWS:**

- **Erika Konkel, MD ('17)** - Joined our Froedtert & Medical College of Wisconsin McKinley Health Center clinic.

**ALUMNI CORNER:**

We'd like to hear from you! Please send us your updates to:

[obgynresidency@mcw.edu](mailto:obgynresidency@mcw.edu)

**DEPARTMENT NEWS CONT'D:**

- **Kristina Kaljo, PhD**—accepted into MCW's Society of teaching Scholars for her outstanding contributions as educational scholars and educational leaders.
- **Bo Rydze, MD** presented his research poster "Pregnancy outcomes by degree of expansion in thawed high quality embryos" at the 2022 American Society for Reproductive Medicine (ASRM) Annual Meeting in Anaheim CA.
- **Jayne Bosler, MD** presented her research poster "The dilemma for patients with a thin endometrial lining: natural cycles or programmed frozen embryo transfer cycles" at the 2022 ASRM Annual Meeting.



**PUBLICATIONS:**

- Miles N, Evans S, Treat R, **Beran B**. A Low-fidelity Model for Office-based Hysteroscopy with a Vaginoscopic Approach. *J Minim Invasive Gynecol*. 2022 Sep 30 PMID: 36184062 10/03/2022
- McAlarnen LA, Gupta P, Singh R, Pradeep S, Chaluvally-Raghavan P**. Extracellular vesicle contents as non-invasive biomarkers in ovarian malignancies *Molecular Therapy - Oncolytics*. 15 September 2022 SCOPUS ID: 2-s2.0-85136664501 09/15/2022
- Parashar D, Geethadevi A, Mittal S, McAlarnen LA, George J, Kadamberi IP, Gupta P, Uyar DS, Hopp EE, Drendel H, Bishop EA, Bradley WH, Bone KM, Rader JS, Pradeep S, Chaluvally-Raghavan P**. Correction: Parashar et al. Patient-Derived Ovarian Cancer Spheroids Rely on PI3K-AKT Signaling Addiction for Cancer Stemness and Chemoresistance. *Cancers* 2022, 14, 958. *Cancers* (Basel). 2022 May 16; 14(10) PMID: 35626175 05/29/2022
- George J, Mittal S, Kadamberi IP, Pradeep S, Chaluvally-Raghavan P**. Optimized proximity ligation assay (PLA) for detection of RNA-protein complex interactions in cell lines. *STAR Protoc*. 2022 06 17;3(2):101340 PMID: 35620072 05/28/2022
- Gupta P, Kadamberi IP, Mittal S, Tsaih SW, George J, Kumar S, Vijayan DK, Geethadevi A, Parashar D, Topchyan P, McAlarnen L, Volkman BF, Cui W, Zhang KYJ, Di Vizio D, Chaluvally-Raghavan P, Pradeep S**. Tumor Derived Extracellular Vesicles Drive T Cell Exhaustion in Tumor Microenvironment through Sphingosine Mediated Signaling and Impacting Immunotherapy Outcomes in Ovarian Cancer. *Adv Sci (Weinh)*. 2022 05;9(14):e2104452 PMID: 35289120 03/16/2022
- Harrison RK, Saravanan V, Davitt C, Cruz M, Palatnik A**. Antenatal maternal hypoglycemia in women with gestational diabetes mellitus and neonatal outcomes. *J Perinatol*. 2022 08;42(8):1091-1096 PMID: 35194160 SCOPUS ID: 2-s2.0-85124956669 02/24/2022
- Davidson ERW, Miceli L, Propst K**. Why Patients Fall Through the Cracks: Assessment of Patients' Overactive Bladder Treatment. *J Womens Health (Larchmt)*. 2022 09;31(9):1314-1319 PMID: 35363051 04/02/2022
- Salmanian B, Einerson BD, Carusi DA, Shainker SA, Nieto-Calvache AJ, Shrivastava VK, Subramaniam A, Zuckerwise LC, Lyell DJ, Khandelwal M, **Fitzgerald GD**, Hessami K, Fox KA, Silver RM, Shamshirsaz AA. Timing of delivery for placenta accreta spectrum: the Pan-American Society for the Placenta Accreta Spectrum experience. *Am J Obstet Gynecol MFM*. 2022 Aug 14;4(6):100718 PMID: 35977702 08/18/2022
- Massad LS, Perkins RB, Naresh A, Nelson EL, Spiryda L, **Gecsi KS**, Mulhem E, Kostas-Polston E, Zou T, Giles TL, Wentzensen N. Colposcopy Standards: Guidelines for Endocervical Curettage at Colposcopy. *J Low Genit Tract Dis*. 2022 Oct 12 PMID: 36222824 10/13/2022
- Higgins RM, Marcdante K, **Kaljo K**, Strong E, Patten C. Medical students and mattering on the surgery clerkship rotation. *Am J Surg*. 2022 Oct 01 PMID: 36208957 10/09/2022
- Boelig RC, **McIntosh J**, Feltovich H, House M. Cervical Length Ultrasound for the Evaluation of Preterm Labor: A Survey of National Use and Review of Evidence. *Am J Perinatol*. 2022 May 17 PMID: 35580624 05/18/2022
- Opichka MA, **Livergood MC**, Sigmund CD, **McIntosh JJ**, Grobe JL. Gq Signaling in the Placental Syncytiotrophoblast Layer During Preeclampsia. *FASEB J*. 2022 May;36 Suppl 1 PMID: 35557079 05/14/2022
- Reinhard M, Flynn KE, **Palatnik A**. Patient-reported barriers and facilitators for intermittent pneumatic compression device use on the antepartum unit. *J Matern Fetal Neonatal Med*. 2022 Oct 09;1-7 PMID: 36210145 10/10/2022
- Walker SL, Anguzu R, Egede LE, **Palatnik A**. Contraception utilization in women with pregestational diabetes. *Eur J Contracept Reprod Health Care*. 2022 Aug;27(4):317-321 PMID: 35946609 08/11/2022
- Cui Y, Marshall A, Tsaih SW, Palatnik A**. Impact of prior gestational diabetes on long-term type 2 diabetes complications. *J Diabetes Complications*. 2022 09;36(9):108282 PMID: 35933918 08/08/2022

**PUBLICATIONS CONT'D:**

Tita AT, Szychowski JM, Boggess K, Dugoff L, Sibai B, Lawrence K, Hughes BL, Bell J, Aagaard K, Edwards RK, Gibson K, Haas DM, Plante L, Metz T, Casey B, Esplin S, Longo S, Hoffman M, Saade GR, Hoppe KK, Foroutan J, Tuuli M, Owens MY, Simhan HN, Frey H, Rosen T, **Palatnik A**, Baker S, August P, Reddy UM, Kinzler W, Su E, Krishna I, Nguyen N, Norton ME, Skupski D, El-Sayed YY, Ogunyemi D, Galis ZS, Harper L, Ambalavanan N, Geller NL, Oparil S, Cutter GR, Andrews WW. Treatment for Mild Chronic Hypertension During Pregnancy Obstetrical and Gynecological Survey. 1 August 2022;77(8):460-462 SCOPUS ID: 2-s2.0-85136145516 08/01/2022

**Palatnik A**, McGee P, Bailit J, Wapner R, Varner M, Thorp JM, Caritis SN, Prasad M, Tita A, Saade G, Rouse DJ, Blackwell SC. The association of race and ethnicity with severe maternal morbidity among individuals diagnosed with hypertensive disorders of pregnancy. Am J Perinatol. 2022 Jun 28 PMID: 35764308 06/29/2022

Costantine MM, Sibai B, Bombard AT, Sarno M, West H, Haas DM, Tita AT, Paidas MJ, Clark EAS, Boggess K, Grotegut C, Grobman W, Su EJ, Burd I, Saade G, Chavez MR, Paglia MJ, Merriam A, Torres C, Habli M, Macones G, Wen T, Bofill J, **Palatnik A**, Edwards RK, Haeri S, Oberoi P, Mazloom A, Cooper M, Lockton S, Hankins GD. Performance of a Multianalyte 'Rule-Out' Assay in Pregnant Individuals With Suspected Preeclampsia. Hypertension. 2022 07;79(7):1515-1524 PMID: 35545947 05/13/2022

**Cui Y**, Binger K, **Palatnik A**. Attitudes and Beliefs Associated With COVID-19 Vaccination During Pregnancy. JAMA Netw Open. 2022 04 01;5(4):e227430 PMID: 35420664 04/15/2022

Wagstaff K, Williams JS, Garacci E, Shour AR, **Palatnik A**, Egede LE. Racial and ethnic differences in the relationship between infant loss after prior live birth and hypertensive disorders in pregnancy. J Matern Fetal Neonatal Med. 2022 Mar 13;1-8 PMID: 35282748 03/15/2022

Tita AT, Szychowski JM, Boggess K, Dugoff L, Sibai B, Lawrence K, Hughes BL, Bell J, Aagaard K, Edwards RK, Gibson K, Haas DM, Plante L, Metz T, Casey B, Esplin S, Longo S, Hoffman M, Saade GR, Hoppe KK, Foroutan J, Tuuli M, Owens MY, Simhan HN, Frey H, Rosen T, **Palatnik A**, Baker S, August P, Reddy UM, Kinzler W, Su E, Krishna I, Nguyen N, Norton ME, Skupski D, El-Sayed YY, Ogunyemi D, Galis ZS, Harper L, Ambalavanan N, Geller NL, Oparil S, Cutter GR, Andrews WW, Chronic Hypertension and Pregnancy (CHAP) Trial Consortium. Treatment for Mild Chronic Hypertension during Pregnancy. N Engl J Med. 2022 05 12;386(19):1781-1792 PMID: 35363951 04/02/2022

**Christine Livergood M**, **Hauck J**, Mahlum L, Tallmadge M, Russell R, Kulinski J, **Palatnik A**. Risk of unplanned healthcare utilization in postpartum period for patients with hypertensive disorders of pregnancy. Pregnancy Hypertens. 2022 Mar;27:189-192 PMID: 35124426 02/07/2022

Fracasso PM, Duska LR, Thaker PH, Gao F, Zoberi I, Dehdashti F, Siegel BA, Uliel L, Menias CO, Rehm PK, Goodner SA, Creekmore AN, Lothamer HL, **Rader JS**. An Exploratory Study of Neoadjuvant Cetuximab Followed by Cetuximab and Chemoradiotherapy in Women With Newly Diagnosed Locally Advanced Cervical Cancer. Am J Clin Oncol. 2022 07 01;45(7):286-293 PMID: 35696702 06/14/2022

**Rydze RT**, **Wang S**, **Schoyer KD**. How costly is fertilization? Fertil Steril. 2022 Sep;118(3):473-474 PMID: 36116800 09/19/2022

**Summey R**, **Uyar D**. Ovarian cancer resistance to PARPi and platinum-containing chemotherapy Cancer Drug Resistance. 2022;5(3):637-646 SCOPUS ID: 2-s2.0-85133600889 01/01/2022

**Stay in touch and follow us!**  
**Have something to share?**  
**Send it our way!**



## IN THE NEWS HIGHLIGHTS:

- **Kate Dielentheis, MD**—NY Times: OBGYN Residency Programs Face Tough Choice on Abortion Training
- **Kate Dielentheis, MD**—JS Online: Wisconsin OB-GYN Programs must send Residents Across State Lines for Training Because of Abortion Ban
- **Amy Domeyer-Klenske, MD**—WPR Postpartum Medicaid: Bipartisan bill would extend postpartum Medicaid coverage in Wisconsin to a year after giving birth
- **Amy Domeyer-Klenske, MD**—Wisconsin Public Radio: If Roe v. Wade is overturned, what will it mean for pregnancy loss care in Wisconsin?
- **Kathy King, MD**—AP News: Wisconsin Doctors Halt Abortions Following Court Ruling
- **Kathy King, MD**—WUWM Lake Effect Interview: Wisconsin Shifts its Work to Meet the Needs of its Patients
- **Allison Linton, MD**—NY Times: Medical Impact of Roe Reversal Goes Beyond Abortion Clinics, Doctors Say
- **Allison Linton, MD**—NY Times: 'Do No Harm': OB-GYNs Weigh the Legal Impact of Abortion Bans
- **Jennifer McIntosh, MD**—The New Yorker: The Dobbs Decision Has Unleashed Legal Chaos for Doctors and Patients
- **Jennifer McIntosh, MD**—The New Yorker: Why a Life-Threatening Pregnancy Complication Is on the Rise

**Dr. Julianne Newcomer** spent several weeks serving aboard the Africa Mercy that was docked off Dakar, Senegal. During her time there she performed multiple surgeries on patients in need brought to the ship to fix vesicovaginal fistula and prolapse of the pelvic organs. The Africa Mercy is one of the largest hospital ships in service and is part of Mercy Ships, a non-profit organization that helps the underserved populations of Africa.



**Drs. Amy Domeyer-Klenske, Kristy Graettinger, Jessica Francis and Stephanie Nguyen** all participated in the Door County Fall 50 relay which was from Gills Rock to Sturgeon Bay in Door County.



### **Froedtert Hospital OBGYN Ranking**

**The Froedtert Hospital OBGYN clinic achieved high ratings on patient satisfaction during the FY 21-22 academic year. 93.2% of our patient rated their overall experience in the clinic as a 9-10/10. We are in the 90<sup>th</sup> percentile of all the clinics we are benchmarked against.**

**This is wonderful recognition of the care that we provide our patients.**