

Obstetrics & Gynecology NEWSLETTER

SCIENCE FEATURE:

The Impact of Fetal Anomalies on Contemporary Labor Patterns— *published in the American Journal of Perinatology*

Drs. McCormick, McIntosh, and Cruz evaluated how labor progresses in women with fetal anomalies. Using a large database (the Consortium of Safe Labor) of over 100,000 patients' labor courses, they were able to demonstrate that women with fetal anomalies experience longer, slower labor than women with normal pregnancies. This information will be helpful for physicians managing patients with anomalies such that they know that it is reasonable to be more patient with how labor progresses in patients whose fetus has an anomaly.

NEW GRANT:

- **Pradeep Chaluvally – Raghavan, PhD:** Division of Research and Advanced Education—R01 CA229907
Role of RNA activation in Tumor Progression and Metastasis

FEATURED CLINICAL TRIALS:

- **EndoBARR—NCT03694262** An Open Label, Non-Randomized Multisite Phase II Trial Combining Bevacizumab, Atezolizumab and Rucaparib for the Treatment of Previously Treated Recurrent and Progressive Endometrial Carcinoma. PI: William Bradley, MD
- **The OVAL Study—NCT03398655** A Randomized, Controlled, Double-Arm, Double Blind, Multi-Center Study of Ofranergene Obadenovec (VB-111) Combined with Paclitaxel vs. Paclitaxel Combined with Placebo for the Treatment of Recurrent Platinum-Resistant Ovarian Cancer

HONOR:

The Medical College of Wisconsin Cancer Center Awarded Top Honor

The National Cancer Institute's (NCI) National Clinical Trials Network (NCTN) designated the MCW Cancer Center as a Lead Academic Participating Site (LAPS) for the strength and innovation of its ongoing research and science and robust participation in its clinical trials. The MCW Cancer Center is one of only 30 institutions in the U.S. to achieve this designation, and the only institution in Milwaukee and the eastern Wisconsin region.

CANCER CRUSH

Join us: September 28th

TO HELP SCIENCE CRUSH CANCER!! With your help, last year we raised over \$10,000!!

Please support us again this year in **CRUSHING CANCER** by donating and/or joining us in the walk/run on **September 28th!**

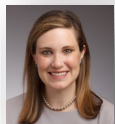
Whether big or small, any amount will HELP! Go to <https://fundraise.mcw.edu/>

obgyn



WELCOME:

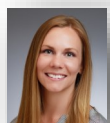
Emily RW Davidson, MD—Assistant Professor in Urogynecology, Cleveland Clinic



Elizabeth Hopp, MD—Assistant Professor in Gynecologic Oncology, University Hospitals Cleveland Medical Center (OBGYN Alumni 2016)



Bo Rydze, MD—Assistant Professor in Reproductive Endocrinology, Baylor College of Medicine



Ashley Boehrig, APNP—Advanced Practice Nurse Practitioner in Gynecologic Oncology

IN THE NEWS:

- **Denise Uyar, MD**—Associate Professor in Gynecologic Oncology, interviewed on CTSI Discovery Radio. She shares facts and her expertise on Human Papillomavirus (HPV) and also a clinical trial that's showing promising results for treating active HPV infection in women.
- **Denise Uyar, MD**—Associate Professor in Gynecologic Oncology, presented on Examining the Link Between Human Papillomavirus and Cervical Cancer at CTSI's Science Café in July.
- **William Bradley, MD**—Associate Professor and **Janet S. Rader, MD**—Department Chair, interviewed on the Milwaukee Public Radio in July. They talked about the research and latest findings in treating ovarian and cervical cancers.
- **Meredith Cruz, MD**—Associate Professor and **Garrett Fitzgerald, MD**—Assistant Professor in Maternal-Fetal Medicine, featured in TMJ4 News segment on providing complex care by a multi-disciplinary team to save a patient and her baby's lives.

CLINICAL UPDATES:

Wellness Within Motherhood: Support for the Fourth Trimester —a new perinatal session. This group is designed to support women with their well-being and developing healthy thoughts and emotions as they transition into the role of mother. It is a 4-week group that is offered monthly on Mondays from 12-1:15pm. It is appropriate for any woman looking to gain education and coping skills related to postpartum adjustment and can be viewed similarly to other prenatal education classes.

The Fibroid Clinic at Froedtert & The Medical College of Wisconsin—offers all patients enrollments in an IRB-approved prospective database to monitor treatment outcomes after chosen therapies. Baseline symptoms and post-treatment symptoms are collected with validated questionnaires to evaluate quality of life effects from uterine fibroids. This database will lead to future studies to help guide treatment decisions for patients affected by uterine fibroids.

Stay in touch and follow us!
Have something to share?
Send it our way!



✓ MARK YOUR CALENDARS:**September 25, 2019: E. James Aiman, MD
Endowed Lectureship.**

Gregg Nelson, MD, PhD, FRCSC from the University of Calgary, Tom Baker Cancer Centre in Alberta, Canada

“Enhanced Recovery After Surgery (ERAS) - The New Standard of Surgical Care in Obstetrics & Gynecology”

**September 28, 2019: Cancer Crush
1 Mile or 5k Run/Walk**

For the 2nd year, The Medical College of Wisconsin in partnership with Froedtert Hospital, will host its “Help Science Crush Cancer”: 1 mile or 5k run/walk on September 28th.

The funds raised will help fuel lifesaving cancer research!

Please consider joining us on September 28th and/or by donating at <https://fundraise.mcw.edu/obgyn>

Whether big or small, any amount will HELP!

COMMUNITY TALKS:

Uterine Fibroids with Benjamin Beran, MD and Alex Fairchild, MD—September 30

The Woman’s Exam with Amy Domeyer-Klenske, MD—October 3

Endometriosis with Benjamin Beran, MD and Camila Bomtempo, MD—October 28

Breastfeeding: Beyond the Basics with Sarah Mess, CNM—November 12

DEPARTMENT NEWS:

- **Amanda Johnson, MD**, MFM Fellow '19, was featured in a Spotlight Article in the Journal of Virology, “Human Cytomegalovirus Disruption of Calcium Signaling in Neural Progenitor Cells and Organoids”. This published article describes the structural and functional consequences of human cytomegalovirus (HCMV) infection on neural organoid development.
- **Pradeep Chaluvaly-Raghavan, PhD**, has been selected to receive the **Cancer Collaborative Award for Basic Science** for his recent successful grant funding and publications at the Medical College Cancer Center’s Cancer Collaborative Celebration.
- **Kate Dielentheis, MD; Kristina Kaljo, PhD; and Talia Coney, MD** (resident class of '2020) have been appointed Council for Women's Advocacy in the Center for the Advancement of Women in Science and Medicine.
- **Jennifer McIntosh, DO’s** mentee—Matthew Rappel - won the Best Poster award at the North American Vascular Biology Organization's Vasculata 2019 meeting and also presented their research poster at the American Heart Association-Hypertension Scientific Sessions.



QUALITY:

In the last 6 months we have expanded our patient safety bundles to include obstetric hemorrhage. This effort included didactic teaching on the bundle as well as an interdisciplinary simulation on obstetric hemorrhage for all team members on labor and delivery led by Dr. Kourtney Dropps. We are actively working on our next obstetric patient safety bundle on severe hypertension.

ALUMNI CORNER:

We'd like to hear from you! Please send us your updates to: obgynresidency@mcw.edu

PUBLICATIONS:

Gupta P, Chen C, **Chaluvally-Raghavan P**, **Pradeep S**. B Cells as an Immune-Regulatory Signature in Ovarian Cancer. *Cancers (Basel)*. 2019 Jun 26;11(7).

Deering R, Pashibin T, **Cruz M**, Hunter SK, Hoeger Bement M. Fatiguing Trunk Flexor Exercise Decreases Pain Sensitivity in Postpartum Women. *Front Physiol*. 2019 Mar 26;10:315.PMID: 30971949.

McCormick A, **McIntosh J**, MS, Gao W, Hibbard JU, **Cruz M**. The Impact of Fetal Anomalies on Contemporary Labor Patterns. *Am J Perinatol*. 2019 Jun 14. PMID: 31200392.

Davidson ERW, Casas-Puig V, Paraiso MFR, Ridgeway B, Ferrando CA. Pelvic Organ Prolapse Recurrence and Patient-Centered Outcomes Following Minimally Invasive Abdominal Uterosacral Ligament and Mesh-Augmented Sacrohysteropexy. *Female Pelvic Med Reconstr Surg*. 2019 Mar 06.

Davidson ERW, Thomas TN, Lampert EJ, Paraiso MFR, Ferrando CA. Route of hysterectomy during minimally invasive sacrocolpopexy does not affect postoperative outcomes. *Int Urogynecol J*. 2019 04;30(4):649-655.

Davidson ERW, Woodburn K, AlHilli M, Ferrando CA. Perioperative adverse events in women undergoing concurrent urogynecologic and gynecologic oncology surgeries for suspected malignancy. *Int Urogynecol J*. 2019 Jul;30(7):1195-1201.

Harrison RK, Egede LE, **Palatnik A**. Peripartum infectious morbidity in women with preeclampsia. *J Matern Fetal Neonatal Med*. 2019 Jun 19:1-6.

Stiff A, **Harrison R**, **Palatnik A**. Case report of massive hemoptysis in pregnancy requiring veno-venous extracorporeal membrane oxygenation. *J Obstet Gynaecol Res*. 2019 Sep 4. doi: 10.1111/jog.14110. [Epub ahead of print]

Huang YW, Chen JH, **Rader JS**, Aguilera-Barrantes I, Wang LS. Preventive Effects by Black Raspberries of Endometrial Carcinoma Initiation and Promotion Induced by a High-Fat Diet. *Mol Nutr Food Res*. 2019 Jun;63(12):e1900013.

Shan T, **Uyar DS**, **Wang LS**, Mutch DG, Huang TH, **Rader JS**, Sheng X, **Huang YW**. SOX11 hypermethylation as a tumor biomarker in endometrial cancer. *Biochimie*. 2019 Jul;162:8-14.



PUBLICATIONS CONT'D:

Sison SL, O'Brien BS, **Johnson AJ**, Seminary ER, Terhune SS, Ebert AD. J Virol. Human Cytomegalovirus Disruption of Calcium Signaling in Neural Progenitor Cells and Organoids. 2019 Aug 13;93(17). pii: e00954-19. doi: 10.1128/JVI.00954-19. Print 2019 Sep 1.

Palatnik A, De Cicco S, Zhang L, Simpson P, Hibbard J, Egede LE. The Association between Advanced Maternal Age and Diagnosis of Small for Gestational Age. Am J Perinatol. 2019 Aug 20. doi: 10.1055/s-0039-1694775. [Epub ahead of print]

Chen M, Sarnoski KA, Jacques LH, **Klatt T, Palatnik A**. Sequential compression device compliance in pregnant women requiring antepartum admission. J Matern Fetal Neonatal Med. 2019 Jun 04:1-7.

Tvina A, Spellecy R, **Palatnik A**. Bias in the Peer Review Process: Can We Do Better? Obstet Gynecol. 2019 Jun;133(6):1081-1083.

Harold JA, Isaacson E, **Palatnik A**. Femoral fracture in pregnancy: a case series and review of clinical management. Int J Womens Health. 2019;11:267-271.

Palatnik A, Liu LY, Lee A, Yee LM. Predictors of early-onset neonatal sepsis or death among newborns born at <32 weeks of gestation. J Perinatol. 2019 Jul;39(7):949-955.

Palatnik A, Kominiarek MA. Outcomes of Elective Induction of Labor versus Expectant Management among Obese Women at ≥39 Weeks. Am J Perinatol. 2019 Apr 30.

Ma S, **Pradeep S**, Villar-Prados A, Wen Y, Bayraktar E, Mangala LS, Kim MS, Wu SY, Hu W, Rodriguez-Aguayo C, Leuschner C, Liang X, Ram PT, Schlacher K, Coleman RL, Sood AK. GnRH-R-Targeted Lytic Peptide Sensitizes Wild-type Ovarian Cancer to PARP Inhibition. Mol Cancer Ther. 2019 May;18(5):969-979.

Rader JS, Pan A, Corbin B, Iden M, Lu Y, Vellano CP, Akbani R, Mills GB, Simpson P. Identification and validation of a prognostic proteomic signature for cervical cancer. Gynecol Oncol. 2019 Aug 30. [Epub ahead of print]

Bongard RD, Lepley M, Gastonguay A, Syrlybaeva RR, Talipov MR, Jones Lipinsky RA, Leigh NR, Brahmhatt J, Kuty R, Rathore R, **Ramchandran R*** and Sem DS*. Discovery and characterization of halogenated xanthene inhibitors of DUSP5 as potential photodynamic therapeutics. Journal of Photochem. and Photobiol. A: Chemistry, 2019, 375, 114-131.

Gupta A, Brahmhatt J, Syrlybaeva R, Bodnar C, Bodnar N, Bongard R, Pokkuluri PR, Sem D, **Ramchandran R***, Rathore R and Talipov MR*. The role of conserved histidine and serine in the HCXXXXXRS motif of human dual-specificity phosphatase 5. J Chem. Inf. Model, 2019, PMID: 30835471.

Gong X, Hou Z, Endsley M, Gronseth E, Rarick K, Jorns J, Yang Q, Du Z, Yan K, Bordas M, Gershan J, Parashar D, **Geethadevi A, Chaluvally-Raghavan P**, Fan Y, Harder D, **Ramchandran R and Wang L**. The interaction of tumor cells and astrocytes promotes breast cancer brain metastases through transforming growth factor-beta2/angiopoietin-like 4 axes. npj Precision Oncology 2019, In press.

